

Multicomponent transducer DKA-ZE series



Three in one - compact measurement of all forces!

- Three-component transducer with force ratio $F_z : F_{x,y} = 10:1$
- Particularly easy to assemble
- Compact form
- 6-lead connection technology
- Low weight

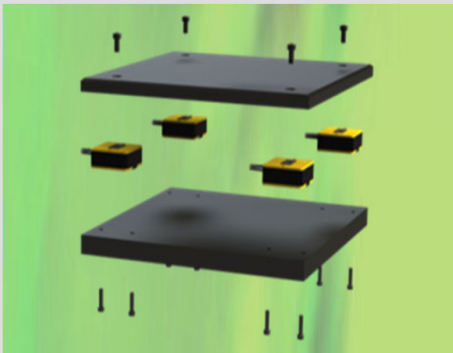


Multicomponent transducer DKA series

Properties and Features

The DKA-ZE series multicomponent transducers open up the world of multicomponent measurement in the simplest way; the three forces of a Cartesian coordinate system can be precisely measured. The lateral forces F_x and F_y are displayed as ten times higher in sensitivity than the force in the z direction.

Simple positioning and assembly is guaranteed by the right-angled construction; within a few minutes, the transducers are positioned in the testing frames and platforms and other constructions are assembled.

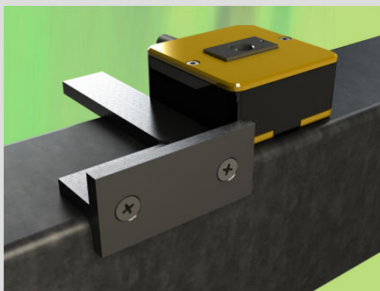


Application Areas

Based upon the differing sensitivities of space forces, the DKA-ZE series is ideal for all applications in which small lateral forces can be expected. Therefore, they are also suited to alignment procedures in single-axis test setups.

A further example of application is gait analysis platforms, whereby a high weight offsets low sideways and lengthways forces.

Thanks to the combination of four transducers of the series DKA-ZE in one platform, for example, occurring moments can be supported and calculated.



Versions

The extremely flat form enables operation even in the most confined installation conditions. Assembly simply involves two screws on the underside and one screw on the upper surface of the transducer. The three measuring cables each have only a 3 mm diameter in a proven six-wire quality.

GTM
Testing and Metrology GmbH
Philipp-Reis-Str. 4-6
64404 Bickenbach
Germany



www.gtm-gmbh.com
contact@gtm-gmbh.com
Tel.: 0049 6257 9720-0
Fax.: 0049 6257 9720-77